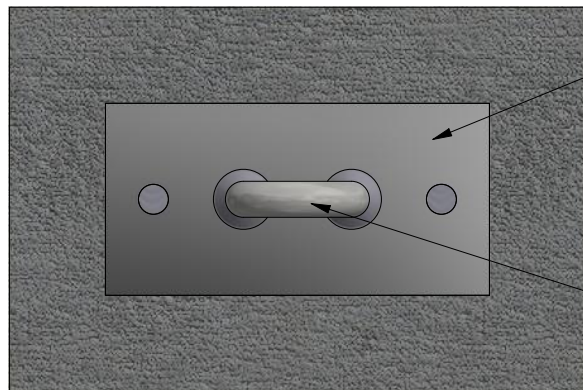
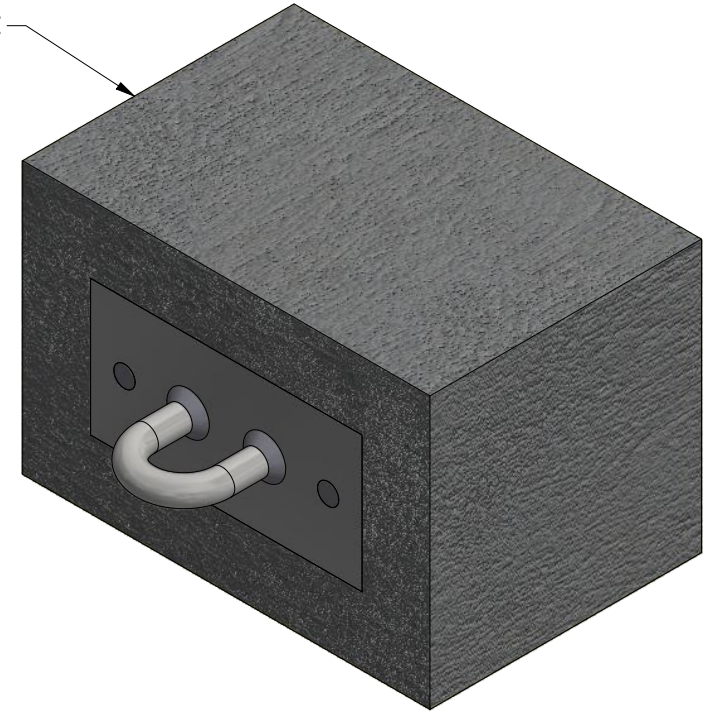


STAINLESS STEEL WELDED EMBED BOLT
(TYP 2 PLACES)

AS
REQUIRED

CONCRETE
(PER PLAN)



STAINLESS STEEL FACE PLATE

STAINLESS STEEL U-BAR

GENERAL MATERIAL SPECIFICATION:

STAINLESS STEEL:	TYPE 304 (FY = 30 KSI)
SS THREADED ROD:	TYPE 304 (FY = 50 KSI)

SERIES NAME: CAST IN PLACE WALL ANCHOR (HORIZONTAL U-BAR)
SERIES NUMBER: WA-2400

RATED LOAD: 1,250 LBS
FRACTURE LOAD: 5,000 LBS

12/4/2019



INFO@PEAK-FP.COM

PH 866-387-9965

WWW.PEAK-FP.COM