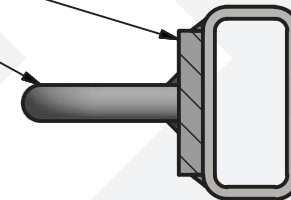


Galvanized Steel Base Plate

Stainless Steel U-Bar

Steel Structure (Per Plan)



Series Name: Weldable Wall Anchor

Series Number: WA-3001

Fracture Load: 5,000lbs

THESE DRAWINGS ARE THE PROPERTY OF PEAK FALL PROTECTION INC., 817 CENTER ST APEX N.C. 27502,
AND SHALL NOT BE USED, COPIED, OR REPRODUCED WITHOUT WRITTEN PERMISSION.



PEAK FALL PROTECTION

DESIGNED SAFETY SOLUTIONS

817 CENTER STREET
APEX NC 27502

PH 919-387-9965
FAX 919-387-9914

INFO@PEAK-FP.COM
WWW.PEAK-FP.COM